

AA6D35HAFM

STANDARD MATERIALS AND CONSTRUCTION

FRAME: Extruded aluminum 6" deep channel frame of .080" thk. (nominal), 6063-T6/T52 alloy.

BLADES: Stationary blades are made from .080" thk. (nominal) extruded aluminum 6063-T6/52 alloy. Blades on 4½" centers. Adjustable Airfoil blades are made from .125" thk. (nominal) extruded aluminum 6063-T6/52 alloy.

LOUVER FACE: Full width sill with head and blades contained within jambs.

SHAFT: .50" dia. aluminum "Pin-Lock" rod.

LINKAGE: Extruded aluminum, concealed in the channel out of the airstream. The trunnions, which rotate in Celcon bearings, are .50" dia. Cadmium plated and Chromate treated machined steel. The trunnion is locked to the 5/16" dia. aluminum linkage rod by a ¼-20 set screw with epoxy locking patch.

SEALS: Extruded silicone rubber seals at blade edge. Foam on bottom blade. Stainless steel at jambs.

SCREEN: (When indicated, in a removable frame)
½" Flattened Aluminum, .051" thk.

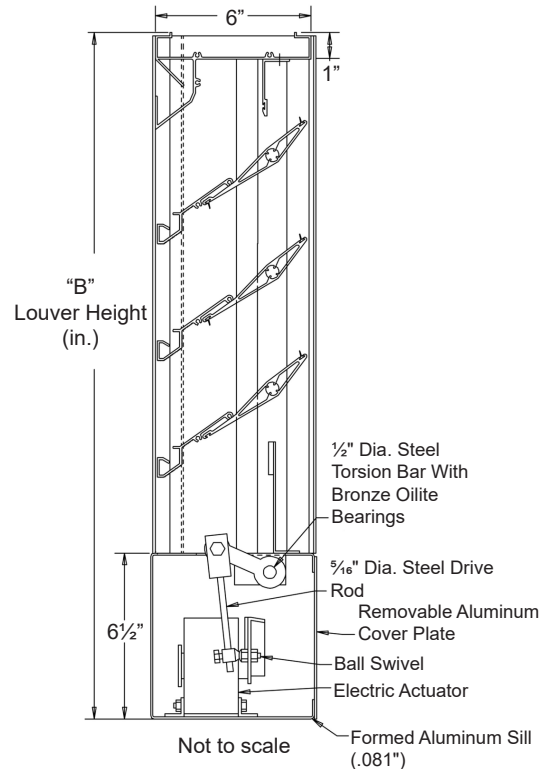
-or- Insect screen 19/16 aluminum mesh, .011" dia.

-or- ½" sq. mesh intermediate double crimped aluminum wire, .063" dia.

FINISH: Mill.

ACTUATOR: 120 VAC spring return normally closed.

133 in-lbs. torque.



OPTIONS

Finishes - Enamels, Epoxies, etc.

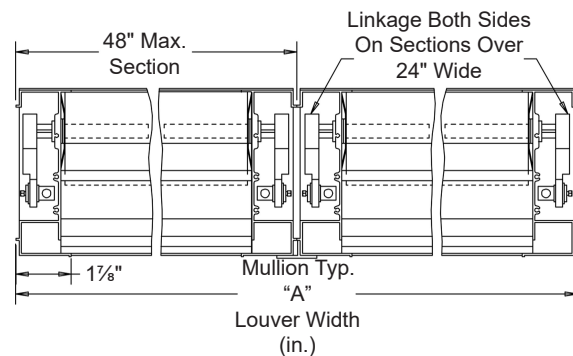
Other screens also available.

NOTES

1. "A" width and "B" height are opening dimensions. Louvers are provided ½" undersize for standard and optional frame construction.

LOUVER SIZES

Min Panel	Max Single Panel
12"W x 19"H	48"W x 96"H



Nominal Deductions will be made to the opening size given.

In the interest of product development, Airline Louvers reserves the right to make changes without notice.

Item #	Qty	Width	Height	Width	Height	Mullion	Type	Location			
		Opening Size		Louver Size			Screens				Union Made
Arch. / Eng. :						EDR:		ECN:		Job:	
Contractor:											
Project:						Date:		DWN:		DWG:	